

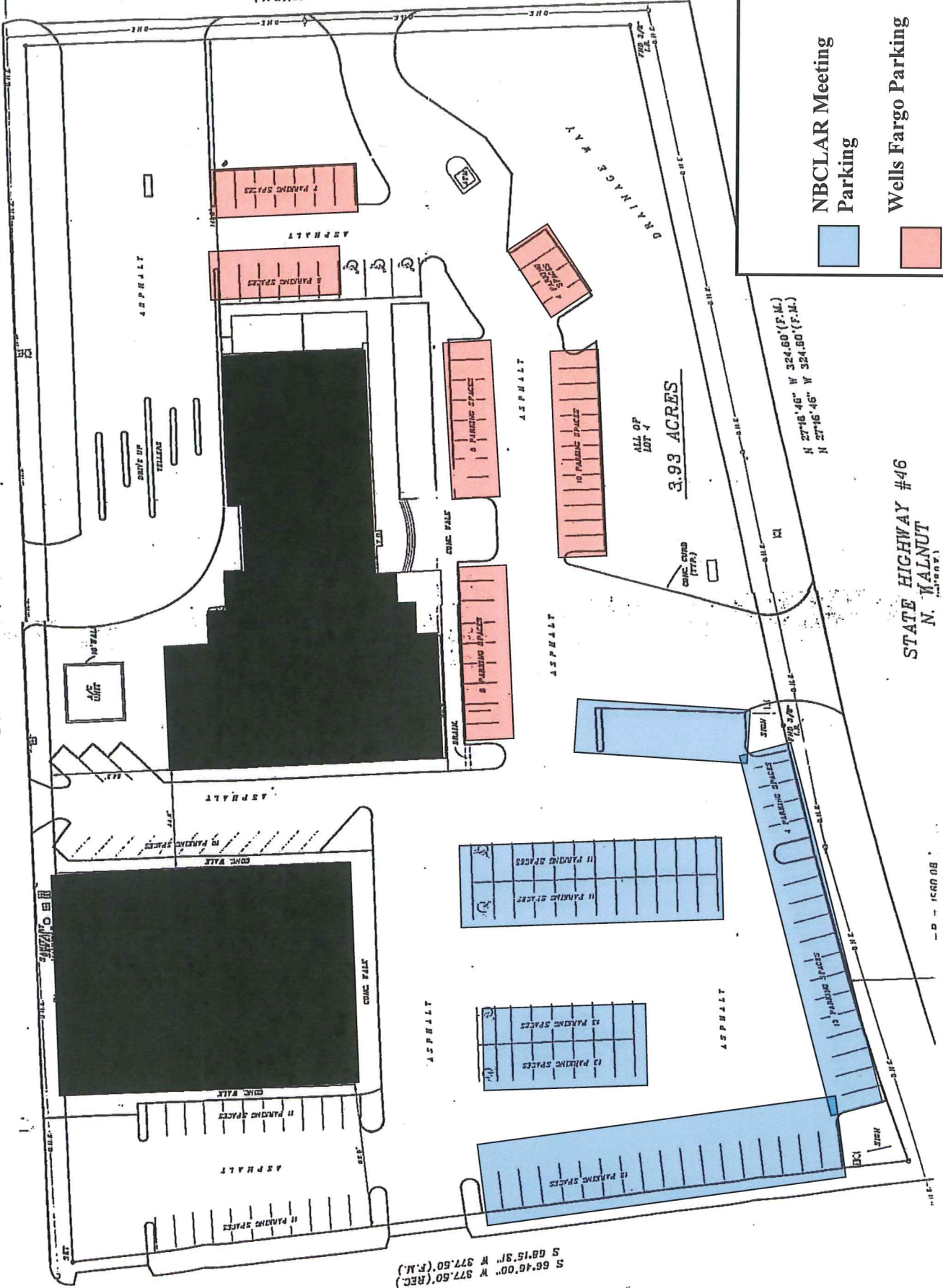

S 17°12'00" E 648.00' (REC.)
S 17°12'29" E 648.60' (F.M.)

S 72°48'00" W 271.80' (F.M.)
S 72°48'00" W 271.80' (REC.)

S 68°46'00" W 377.60' (REC.)
S 68°15'31" W 377.60' (F.M.)

**NBCLAR Meeting
Parking**

Wells Fargo Parking



STATE HIGHWAY #46
N. WALNUT

ALL OF
LOT 4
3.93 ACRES

N 27°18'48" W 324.60' (F.M.)
N 27°16'46" W 324.60' (F.M.)

15-11-11